

LEE FARM METROPOLITAN DISTRICTS NOS. 1-4

c/o Pinnacle Consulting Group, Inc.
550 W. Eisenhower Blvd Loveland, CO 80537
Phone: 970-669-3611 FAX: 970-669-3612
Email: Carolv@PinnacleConsultingGroupInc.com

January 7, 2020

Larimer County
Office of the Clerk and Recorder
200 W. Oak St.
Ft. Collins, CO 80521

Via Online Filing Portal

Larimer County
Office of the Assessor
200 W. Oak Street
Fort Collins, CO 80522-1190

Via Email:overbebc@larimer.org
cc: fordla@co.larimer.co.us

Division of Local Government
1313 Sherman Street, Room 521
Denver, CO 80203

Via E-Filing Portal

Dear Sir or Madam:

As required by statute (C.R.S. 32-1-306), all Title 32 Article 1 special districts are required to annually file a current, accurate map of district boundaries with the County Clerk and Recorder, Assessor and Division of Local Government.

Please be advised that the boundary of the Lee Farm Metropolitan District Nos. 1-4 did change in 2019 and attached is the revised boundary map. The District is wholly located within Larimer County.

Please feel free to contact me with any questions or concerns.

Sincerely,

LEE FARM METROPOLITAN DISTRICTS NOS. 1-4


Carol VanBeber
District Administrator

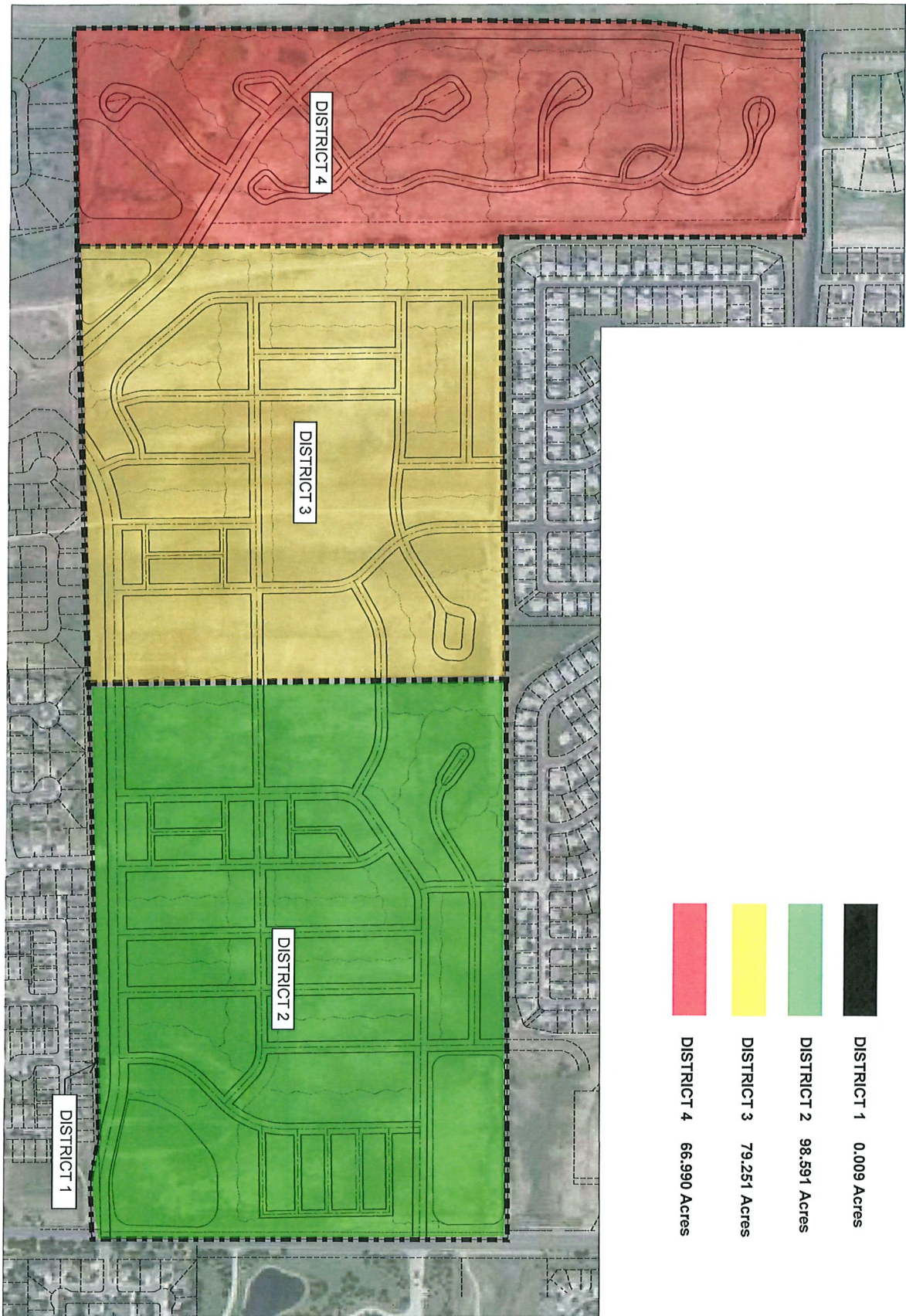


EXHIBIT A

DISTRICT BOUNDARIES